

Floor 0

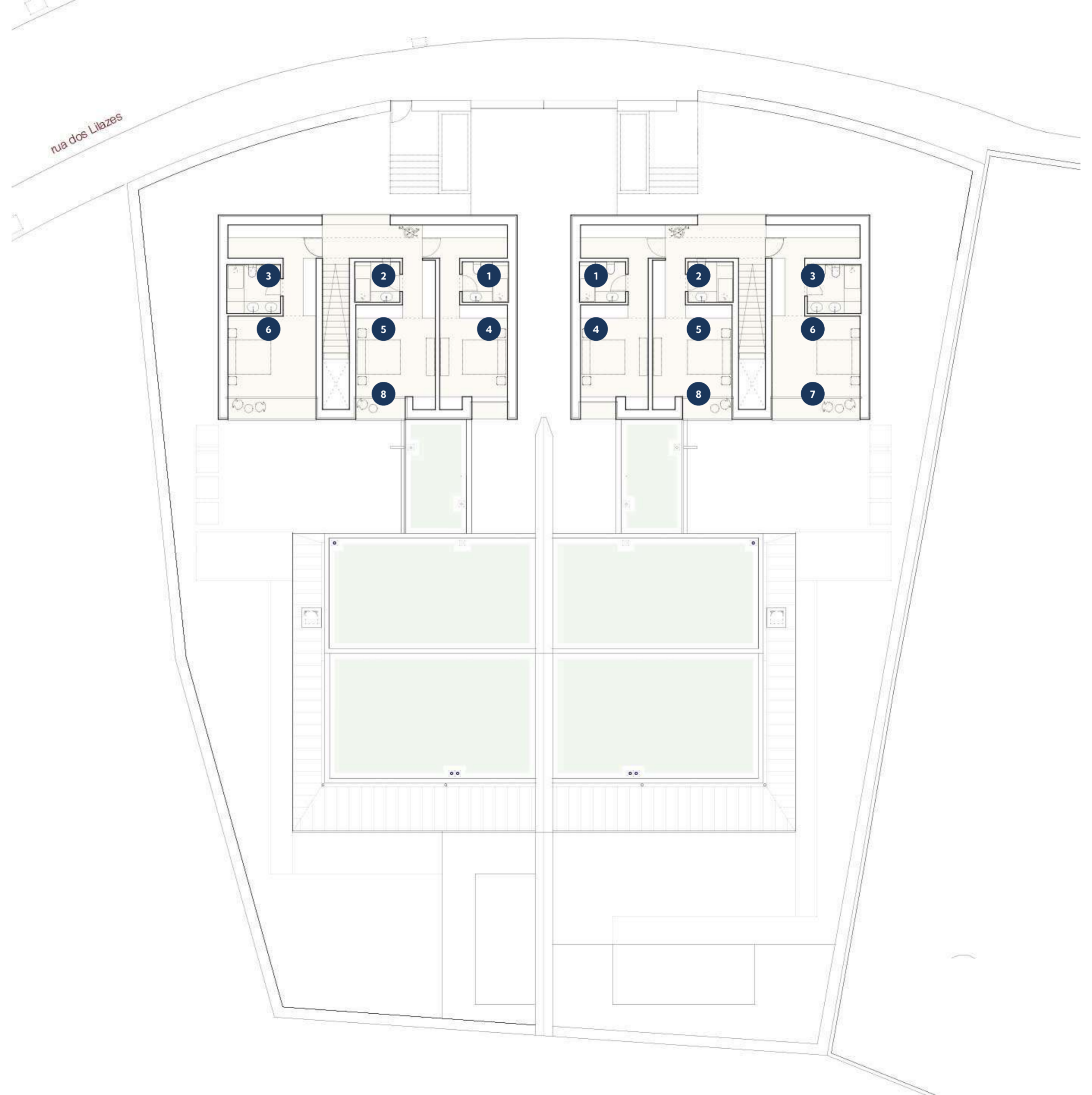
1	Living room	56.00 m ²
2	Dinning room	31.50 m ²
3	Kitchen	21.00 m ²
4	Outdoor toilet	1.80 m ²
5	Lobby	12.75 m ²
6	Toilet	3.15 m ²
7	Bedroom 1	23.05 m ²
8	Bathroom 1	5.60 m ²
9	Office	12.45 m ²
10	Outdoor storage	2.50 m ²
Total Gross Area		286.80 m²



Floor 1

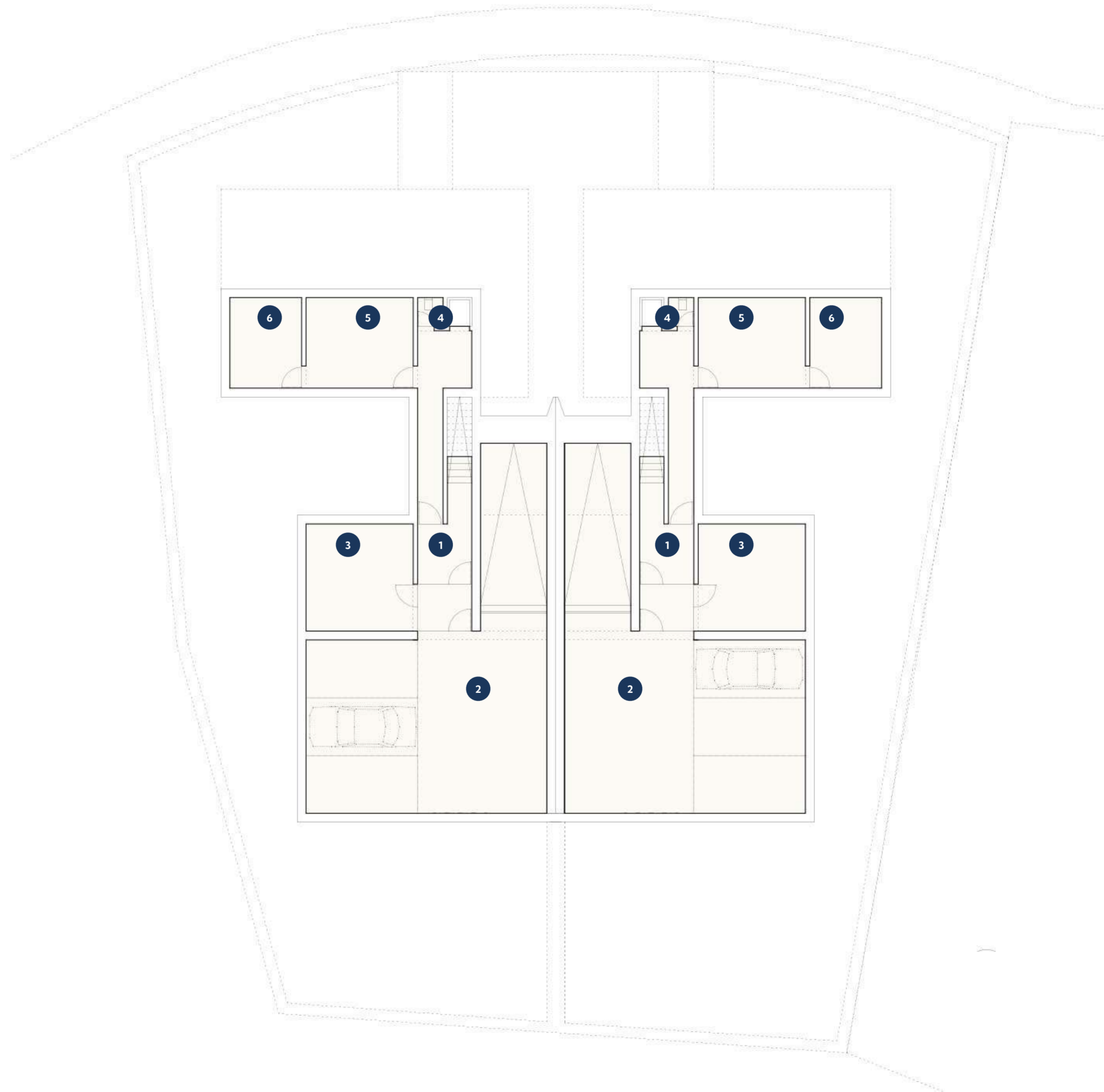
1	Bathroom 2	5.70 m ²
2	Bathroom 3	4.00 m ²
3	Bathroom 4	4.05 m ²
4	Bedroom 2	26.50 m ²
5	Bedroom 3	19.75 m ²
6	Bedroom 4	22.25 m ²
7	Balcony 01	4.00 m ²
8	Balcony 02	2.30 m ²

Total Gross Area 132.00 m²



Floor -1

1	Lobby	13.00 m ²
2	Garage	87.00 m ²
3	Gymnasium	22.00 m ²
4	Toilet	2.10 m ²
5	Laundry	20.40 m ²
6	Technical Area	13.70 m ²
Total Gross Area		227.45 m²



Coverage

- 1 Green Roof
- 2 Gravel cover
- 3 Solar Panels

Total Coverage Area 312.00 m²

